

ISOTRACK X SERIES
PROTECT – BE SAFE

HEAVY DUTY TEMPORARY ACCESS AND GROUND PROTECTION MAT

ISOTRACK X IS THE PREMIUM
EXTREME HEAVY DUTY ROAD MAT
FOR SAFE TEMPORARY ACCESS,
WORK SITES AND STAGING AREAS
ON SOFT OR CHALLENGING
GROUND CONDITIONS

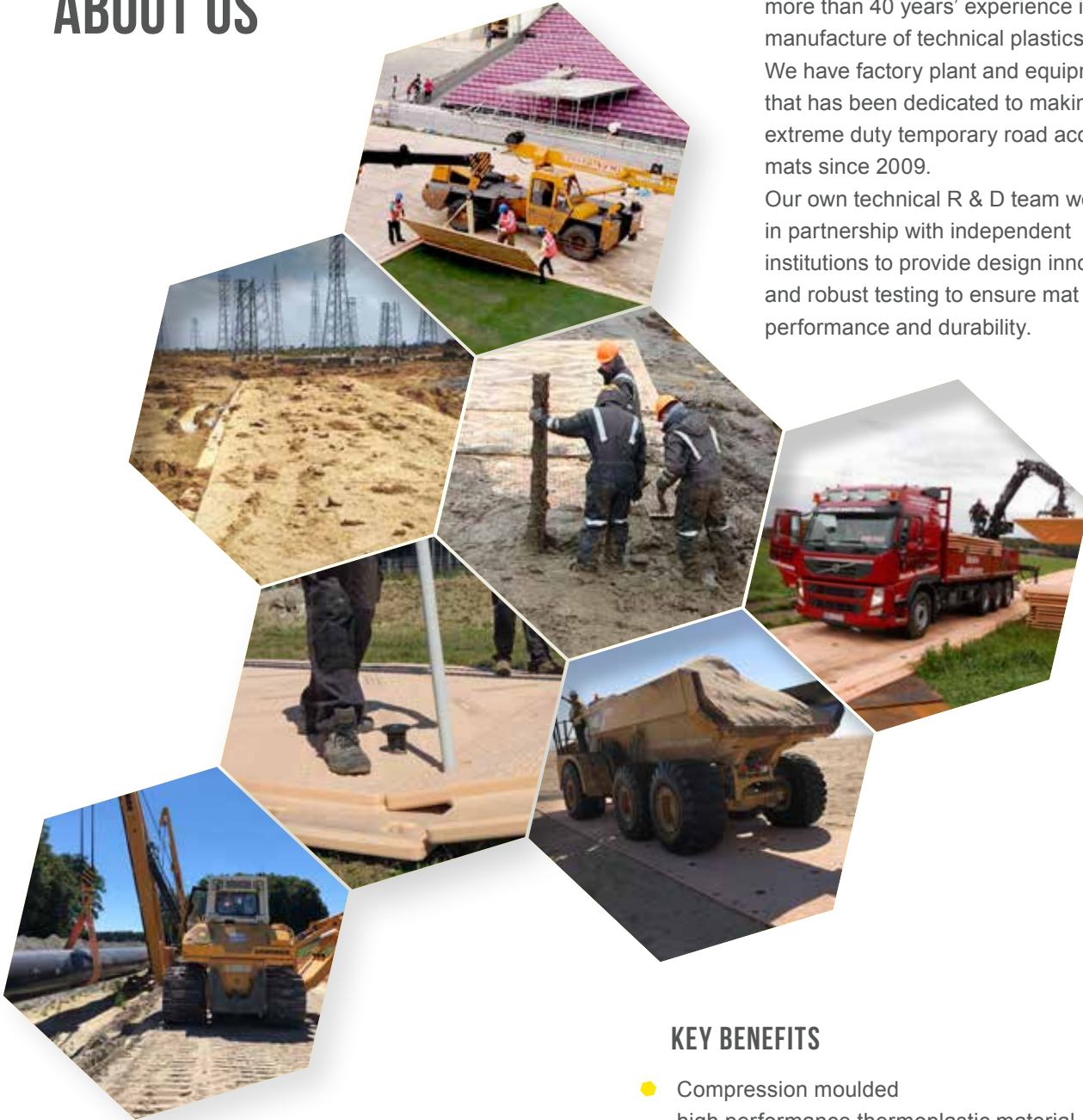


ABOUT US

Isokon is a European company with more than 40 years' experience in the manufacture of technical plastics.

We have factory plant and equipment that has been dedicated to making extreme duty temporary road access mats since 2009.

Our own technical R & D team works in partnership with independent institutions to provide design innovation and robust testing to ensure mat performance and durability.



KEY FEATURES

- Outstanding compressive strength - more than 415 tonnes/m² reaching max force 730 tonnes/m²
- Each mat has two different traction surfaces - for tyres and steel tracks
- Market leading surface Isotraction™ design for safe vehicle operation
- Foam filled core prevents water ingress if mat is punctured (no cross contamination and no additional weight)

KEY BENEFITS

- Compression moulded high performance thermoplastic material
- Robust, durable, high-performance mat
- Overlap design for interlocking mats to make roadways, work pads, parking and turning areas
- Fast Four3 connector pin system
- Cellular core construction provides buoyancy in water-logged areas
- Stability and support for vehicles and equipment across a wide range of ground conditions
- Reduce dust pollution on dry soils
- Protect sensitive habitats
- Customer logo option
- Long life and recyclable at end of life
- Accessories include turning pieces and on/off ramp

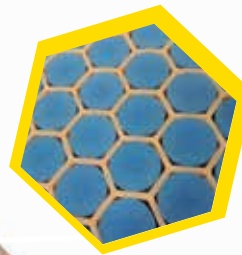
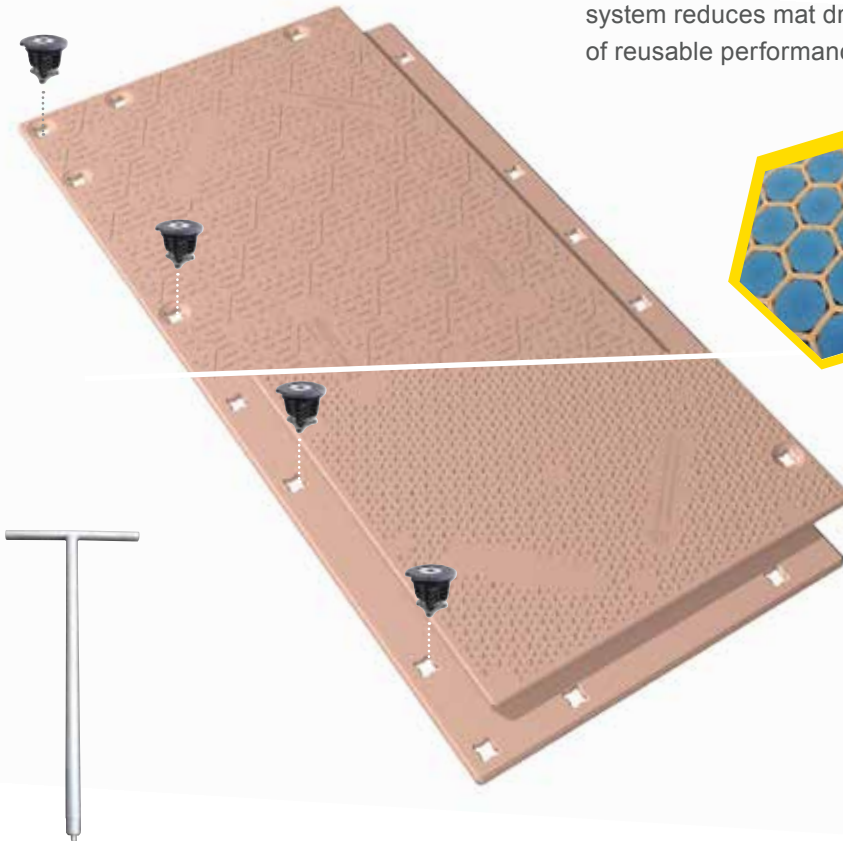
APPLICATIONS-MAIN SECTORS

- Construction and civil engineering
- Utilities
- Oil and gas
- Petrochemical
- Transmission
- Windfarms / renewable energy projects
- Drilling contractors
- Pipelines
- Quarries and mining
- Commercial timber and woodland operations
- Events
- Any project requiring safe temporary access and work areas for heavy vehicles and equipment



SAFETY AND EFFICIENCY

Engineered for performance and strength, the interlocking overlap mats distribute weight across a large surface area while remaining stable and strong through all operating conditions. The Isotrackson™ surface tread improves traction and safety for load-bearing vehicles, while the patented Four3 connection system reduces mat drift and slippage. The mats provide years of reusable performance with proper use and maintenance.



Foam filled core prevents water ingress if mat is punctured (no cross contamination and no additional weight)



General information

Overall Dimensions	4000 x 2000 mm 13.1 ft x 6.5 ft	Safety	Surface structure designs provide excellent traction for vehicles
Thickness	Total 102 mm 4 inch; Core 94 mm 3.7 inch	Environmental	No liquid absorption, chemically inert, allows easy decontamination-cleaning
Overlap	200 mm 7.8 inch	Compressive load capacity:	Can withstand 415 t/m ² (605 psi) without deformation or breakage
Useable Surface Area	1.8 x 3.8 m = 6.84m ² 5.9 ft x 12.50 ft = 73.75 sq ft	Load bearing capacity	In excess of 200t*
Weight	360kg 793 lbs	Operating Temperature Range	- 40°C to + 80°C - 40°F to + 176°F
Colour	Sand (standard), other colours subject to minimum order quantity	Fire Rating	UL 94HB
Transport	Standard high cube 40 feet container 52 mats, Mega Truck standard EU 60 mats	AST additive	Tested according to DIN standard IEC EN 62631-3-2:2016
Handling and Installation	Easily handled and installed using different types of equipment	RFID or GPS Tags	Option to install your tag of choice within weather proof pocket.
Recycling	100% recyclable		

* Load bearing capacity is dependent on ground conditions.



Isotrackson USA
T: +1 (424) 522-2031
isotrackson.usa@isokon.si
www.isotrackson.us

Isokon d.o.o.
Industrijska cesta 16
3210 Slovenske Konjice
Slovenia / EU
T: +386 (0)3 757 11 00
F: +386 (0)3 757 10 63
E: sales@isokon.si
www.isokon.si

- * No reproduction of product photographs, drawings or images is permitted without the prior written approval of Isokon.
- * The information contained herein is based on current knowledge and does not guarantee properties or performance of the product under all conditions. Refer to Isokon Standard Terms and Conditions.